

Violin I

Two Medieval Carols

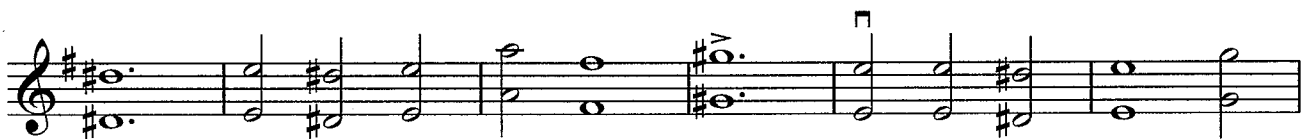
Anon.
Arr. P. Martin

Moderato $\text{♩} = 90$

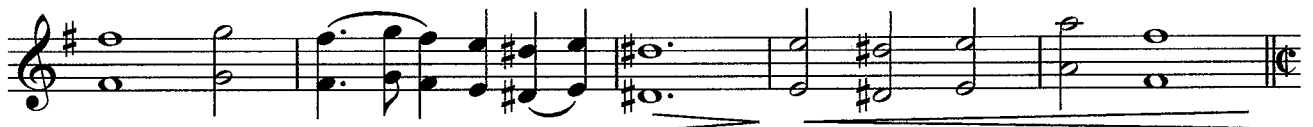
A



B



rall.



Violin I

2

C

Con moto $\text{♩} = 140$

First staff of music, starting with a treble clef and a key signature of one sharp (F#). It begins with a fortissimo (*ff*) dynamic and features a series of slurs over eighth notes. A forte (*f*) dynamic is indicated later in the staff.

D

Second staff of music, continuing the melodic line with slurs and a forte (*f*) dynamic.

E

Third staff of music, featuring a mezzo-piano (*mp*) dynamic and a repeat sign.

cresc.

f

Fourth staff of music, showing a crescendo (*cresc.*) leading to a forte (*f*) dynamic.

F

Fifth staff of music, starting with a forte (*f*) dynamic and a repeat sign.

G

Sixth staff of music, featuring a mezzo-piano (*mp*) dynamic and a crescendo (*cresc.*) at the end.

f

Seventh staff of music, including first and second endings (1. and 2.) and a forte (*f*) dynamic.

rall.

ff

Eighth staff of music, concluding with a fortissimo (*ff*) dynamic and a *rall.* (rallentando) marking.

Violin II

Two Medieval Carols

Anon.
Arr. P. Martin

Moderato $\text{♩} = 90$

A

B

Violin II

2

C

Con moto $\text{♩} = 140$

First staff of music, starting with a treble clef and a key signature of one sharp (F#). It begins with a *ff* dynamic marking and features a series of sixteenth notes with slurs and accents. A *f* dynamic marking appears later in the staff.

D

Second staff of music, continuing the melodic line with slurs and accents. A *f* dynamic marking is present.

E

Third staff of music, featuring a change in dynamics to *mp* (mezzo-piano).

Fourth staff of music, marked with *cresc.* (crescendo) and ending with a *f* dynamic marking.

F

Fifth staff of music, starting with a *f* dynamic marking and including slurs and accents.

G

Sixth staff of music, marked with *mp* (mezzo-piano).

Seventh staff of music, marked with *cresc.* and *f*, and includes first and second endings.

Eighth staff of music, marked with *rall.* (rallentando) and *ff* (fortissimo), ending with a fermata.

Viola

Two Medieval Carols

Anon.
Arr. P. Martin

Moderato $\text{♩} = 90$

A

mp

B

f

rall.

C

Con moto $\text{♩} = 140$

First musical staff, bass clef, key signature of one sharp (F#). It begins with a fortissimo (*ff*) dynamic and features a series of eighth notes with slurs. A forte (*f*) dynamic is indicated later in the staff.

D

Second musical staff, bass clef, key signature of one sharp. It starts with a forte (*f*) dynamic and contains a sequence of eighth notes with slurs.

E

Third musical staff, bass clef, key signature of one sharp. It begins with a mezzo-piano (*mp*) dynamic and features eighth notes with slurs.

Fourth musical staff, bass clef, key signature of one sharp. It starts with a *cresc.* (crescendo) marking and ends with a forte (*f*) dynamic.

F

Fifth musical staff, bass clef, key signature of one sharp. It begins with a forte (*f*) dynamic and contains eighth notes with slurs.

G

Sixth musical staff, bass clef, key signature of one sharp. It starts with a mezzo-piano (*mp*) dynamic and features eighth notes with slurs.

Seventh musical staff, bass clef, key signature of one sharp. It begins with a *cresc.* marking and a forte (*f*) dynamic. The staff includes first and second endings, indicated by '1.' and '2.' above the notes.

Eighth musical staff, bass clef, key signature of one sharp. It starts with a *rall.* (ritardando) marking and a fortissimo (*ff*) dynamic. The staff concludes with a final chord.

Cello

Two Medieval Carols

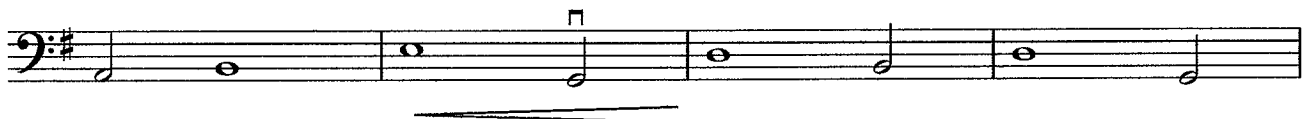
Anon.
Arr. P. Martin

Moderato $\text{♩} = 90$

A



B



C

Con moto ♩ = 140

D

E

F

G